



6 Beech House Barkleys Hill

Stapleton, Bristol, BS16 1FF

Asking price £280,000



6 Beech House Barkleys Hill



Description

A Grade II listed historic building that has been converted into private residential apartments in the popular district of Stapleton boasting far reaching views over the city. This delightful apartment is set in lovely grounds with parking and well presented communal halls. In brief, the accommodation comprises of a spacious reception room, with sash windows to a dual spect, a modern fitted kitchen and two well-proportioned bedrooms (one en-suite) and a further bathroom.

The location is particularly appealing, as it combines the tranquillity of suburban life with easy access to the vibrant local amenities. Residents can enjoy nearby parks, shops, and local eateries, making it a wonderful place to call home. Bristol City Centre and the M32/M4/M5 motorway links are close by.

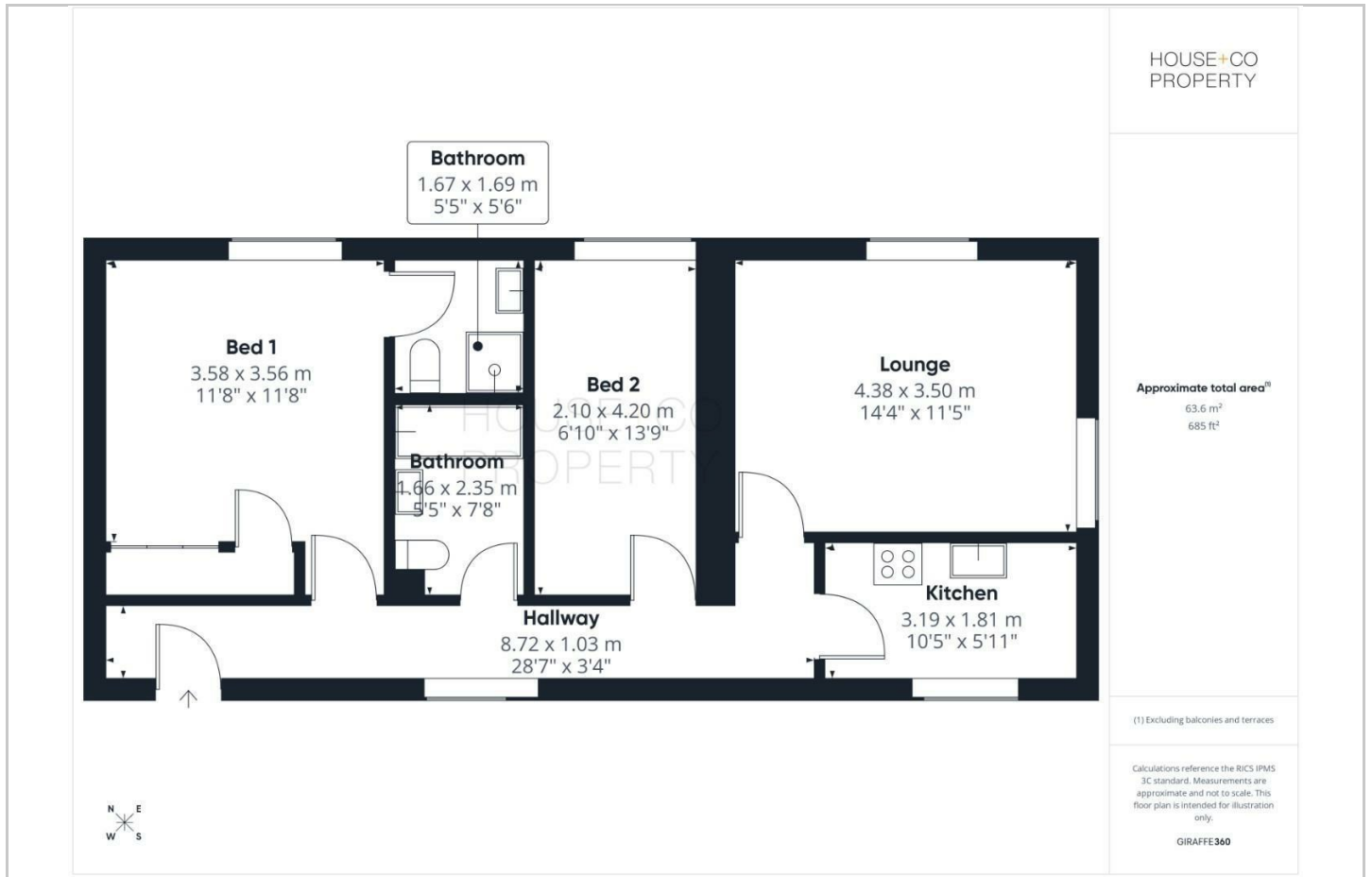
Offered with no onward chain, come and take a look.

- OFFERED WITH NO ONWARD CHAIN
- EASY ACCESS TO THE CITY AND MOTORWAY
- LOUNGE WITH DUAL ASPECT WINDOWS
- PERIOD STYLE BATHROOM
- PARKING
- SET WITHIN A STUNNING LISTED BUILDING
- 2 BEDROOMS. MASTER EN-SUITE
- MODERN FITTED KITCHEN
- WELL MAINTAINED GROUNDS

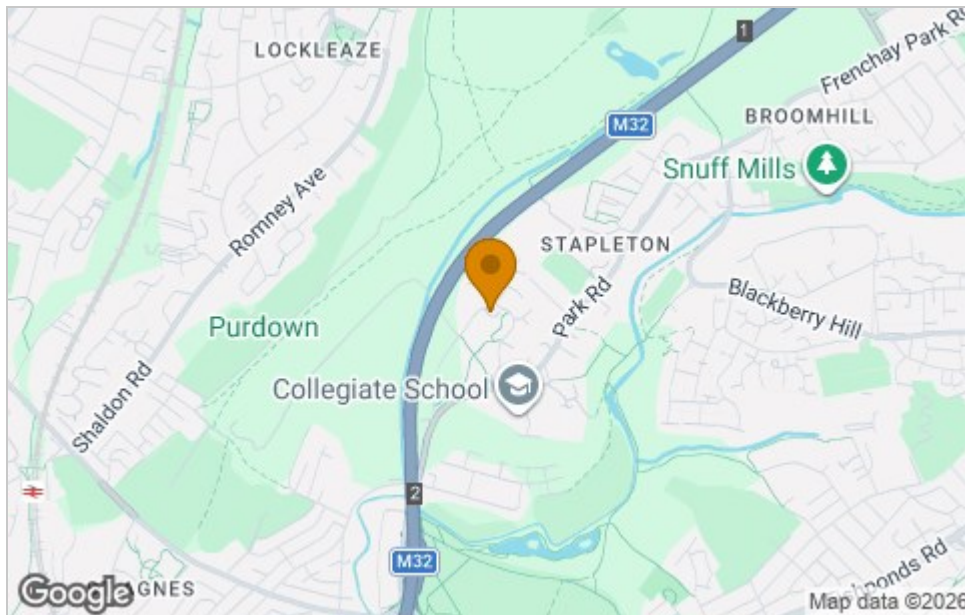




Floor Plan



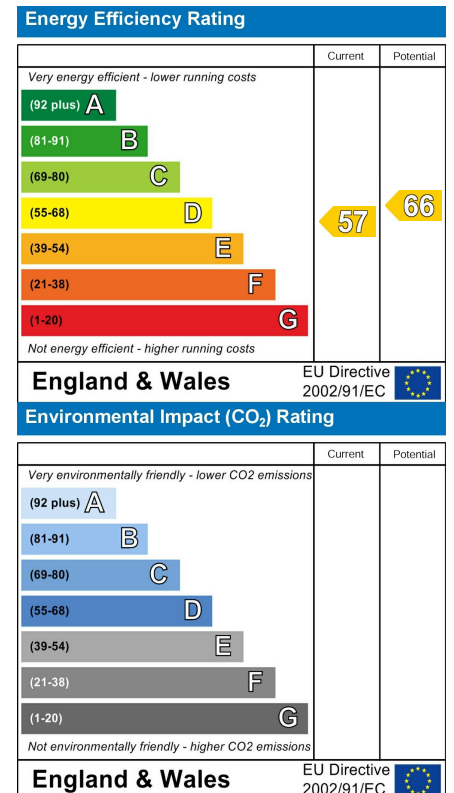
Area Map



Viewing

Please contact our House + Co Property (Sales) Office on 0117 907 0020 if you wish to arrange a viewing appointment for this property or require further information.

Energy Efficiency Graph



These particulars, whilst believed to be accurate are set out as a general outline only for guidance and do not constitute any part of an offer or contract. Intending purchasers should not rely on them as statements of representation of fact, but must satisfy themselves by inspection or otherwise as to their accuracy. No person in this firm's employment has the authority to make or give any representation or warranty in respect of the property.